

Life Is On

eliwell[™]
by Schneider Electric

Refrigeration Expert XP

Plug-n-play monitoring and remote maintenance for small stores



- > Keep your cooling equipment under control with operational notifications
- > Manage system maintenance and troubleshooting remotely
- > Quickly access HACCP reports

www.eliwell.com



Refrigeration Expert XP

The ready-to-use, quick and simple solution for monitoring and remotely maintaining refrigeration systems for up to 10 units.

Small-sized retail stores require comprehensive and **optimal management of the refrigeration system**, which is both **quick and intuitive**, to maintain system efficiency and preserve the quality of stored food, while minimizing food waste.

Thanks to **Refrigeration Expert XP**, food retail store manager has full visibility into the operation of equipment, such as refrigerated display cases or cold rooms, up to energy consumption and refrigerant leakage. The maintenance technician can analyze performance and take action to resolve issues or fine-tune control devices.

Active & Proactive

- Minimize food waste with complete alert management
- HACCP report automation
- Preserve equipment efficiency with performance data and remote maintenance

Compact yet powerful

- 4 DIN-rail module
- One year history for 200 resources
- Up to 10 controllers completely managed
- Automated reporting and alarm notification

Flexible

- Compatible with all standard Eliwell controllers
- Energy meters management
- Capability to manage third-parties controllers
- Stand-alone and remotely connectable

Plug-n-play

- Connect the controllers directly to the RS-485 port
- Auto-detect controllers **for quick initial configuration**
- Access web user interface directly via USB



Environmentally responsible

- Sustainable performance, by Design: less plastics, sustainable package
- Compliance with environmental regulations

Continuously up-to-date

- Extending life cycle through a software upgradable over time with new functionalities

Enhanced User Experience

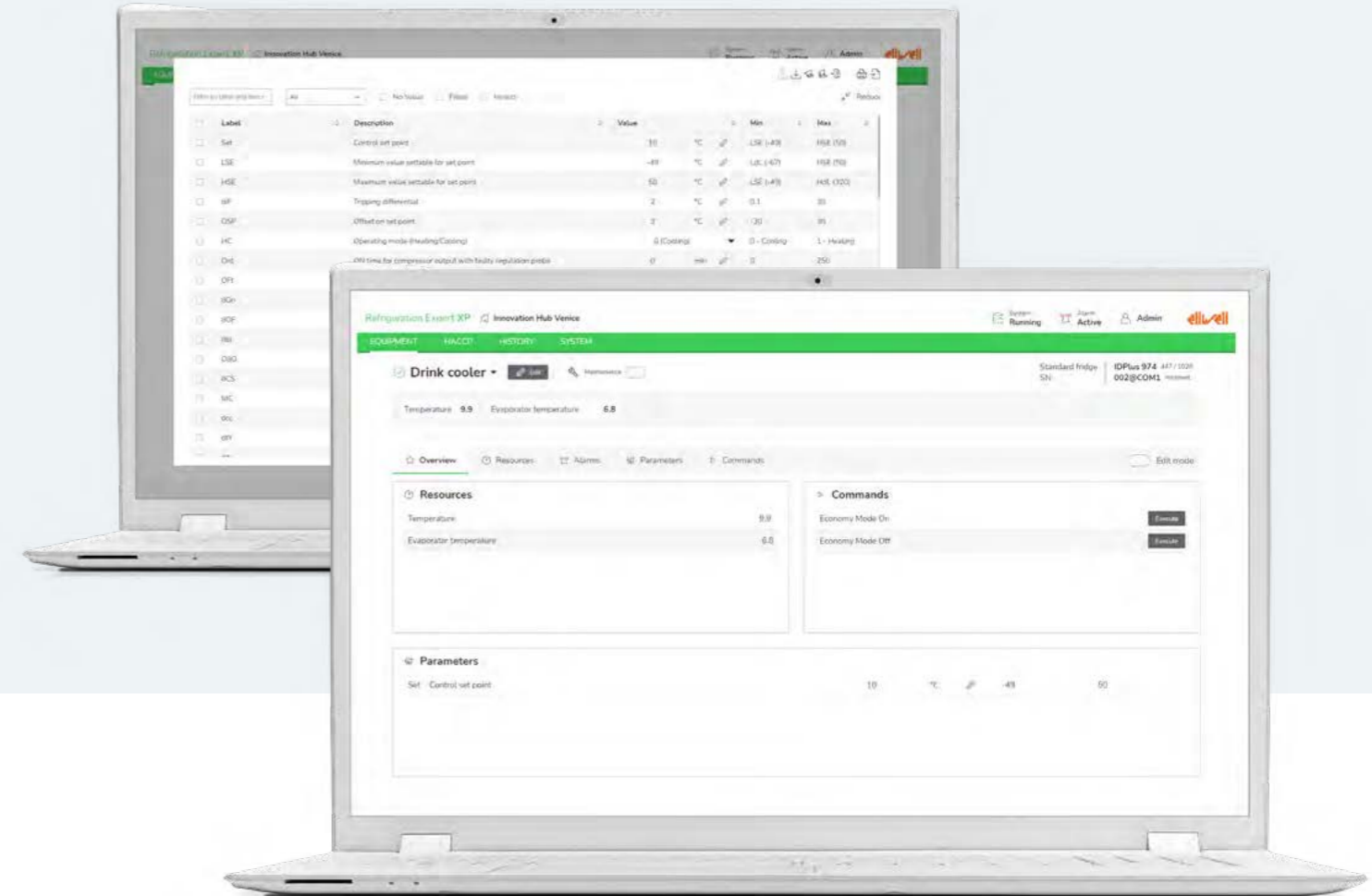
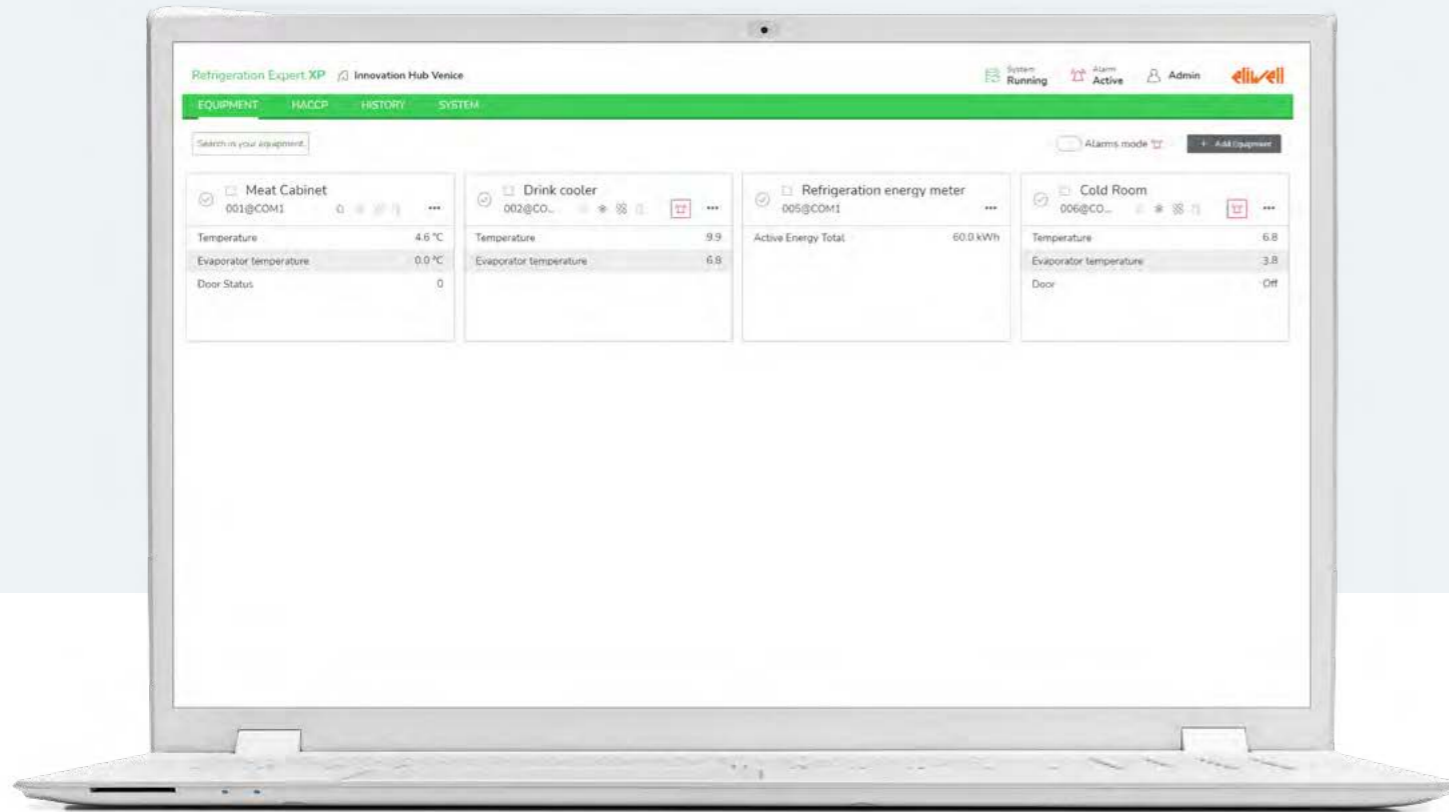
- Accessible from smartphone, tablet and PC
- Intuitive user interface with dedicated dashboards
- All maintenance activities one-click accessible

Cybersecure

- Schneider Electric microcontroller
- Secure Boot
- Secure cryptography with TPM module
- HTTPS with certificates management
- Strong password management
- Software upgrades from trusted sources only

An intuitive experience thanks to a user-tailored interface

Refrigeration Expert XP



Fast and intuitive system interface

- ✓ Interface adaptable to specific content for each type of user: store owner, maintenance technician, store manager
- ✓ **EQUIPMENT** to quickly view the status of the system, access details of each device, and directly perform common functions
- ✓ **HACCP** to display the daily dashboard and configure periodic sending
- ✓ **HISTORY** to display the alarm history, analyze data from the last 12 months, and configure automatic report sending
- ✓ **SYSTEM** for software configuration, diagnostics, and support

Equipment overview

For each device connected to the system, it provides more detailed operational information and the main parameters and commands.

The overview is also the access point for viewing, using, and configuring every detail of the controller: functional states, Alarms, complete set of Parameters and Commands.

Parameters

It allows quick and safe operation on each controller parameter. Specific functions for the installer allow the preservation of an original copy of the map for quick restoration.

Resources and commands

They provide maximum detail on the controller status with quick access to the history of active alarms.

The system administrator can configure and customize the display of available resources on each page, by directly acting on the displayed resources.

Build and configure your system

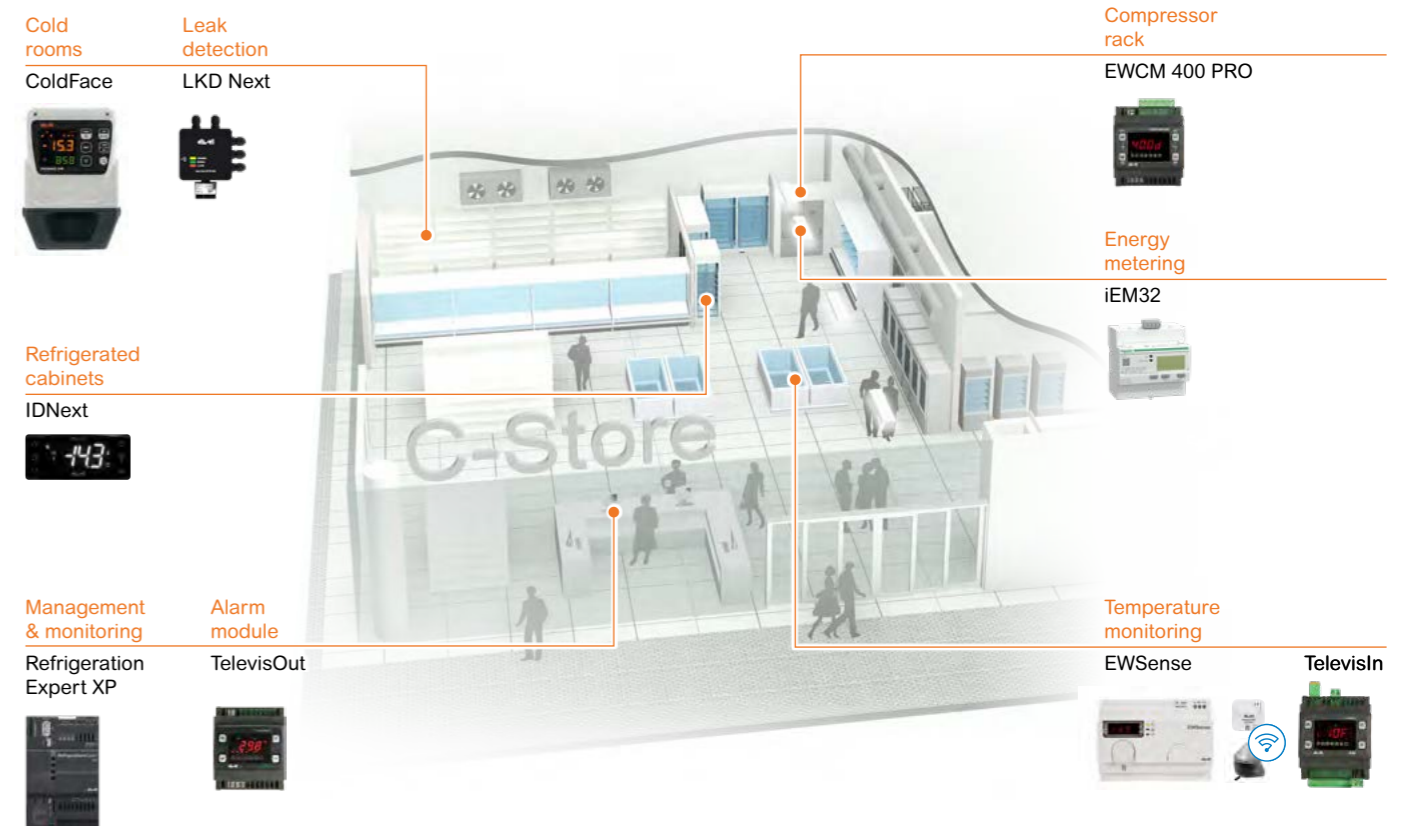
Refrigeration Expert XP

Before starting the configuration

Plan remote connectivity based on the available network type. Before purchasing the product, refer to the manual to learn about the available options and required configurations.

- 1 **Install Refrigeration Expert XP in an existing or dedicated electrical panel.** Power it with a 24 Vac/dc power supply with a minimum power of 11VA / 8W.
- 2 **Connect Refrigeration Expert XP to the Eliwell controllers** for cold rooms, refrigerators, condensing units, and compressor racks. Use BusAdapter 150 or BusAdapterDongle for controllers that do not have an RS-485 serial interface.
- 3 **Connect Refrigeration Expert XP to your PC using the provided USB cable and start the user and connectivity configuration;** identify connected devices with the Autodetect function and set up the resources to manage, to be included in HACCP reports and inserted in reports and graphs; set up alarm priorities and parameters for sending notification; Configure the sending of periodic HACCP reports and on the equipment operation.
- 4 **Access Refrigeration Expert XP to check the status of the system** and receive notifications in case of malfunction.
 For the store manager: turn lights on/off, modify operating settings, and pause alarm notifications during counter cleaning. Quickly check the HACCP records and consumption data at a glance.
 For the maintenance operator: check the operation of the devices by analyzing historical data, take action remotely to improve performance or correct malfunctions.

Typical system components



Refrigeration Expert XP: details and compatible accessories



P/N	Description
RXB01000E0000	Refrigeration Expert XP /10

Access the complete guide for setting up Refrigeration Expert on Digital Academy

Main compatible controllers:
 EWRC, IDNext, IDPlus, EWNNext, EWPlus, EWSense, TelevisIn, LKDNext, TelevisOut, RTX, RTN, EWCM, Schneider Electric iEM 3xxx.
 Browse the complete list by visiting the product page on eliwell.com.

Accessory	P/N	Description
1 Power supply	ABLM1A24006	POWER SUPPLY 24V 0.6A MODULAR
2 Modem / router	SAM4GW000AA00	ROUTER 4G LTE W/ANT PSU RUT 200
3 Alarm module	TAMOD602RS700	TelevisOut 100-240Vac
4 TTL/RS-485 converter	BA10000R3700	BusAdapter 150
5 TTL/RS-485 converter	BA00000XD000	BusAdapter 150 DONGLE



DIGITAL ACADEMY



ACCESS HERE

Your digital space to find out, choose and make the most effective use of Eliwell's products and solutions. Just a click to increase your competencies and your business.

INNOVATION HUB



ACCESS HERE



Experience digitization through a showroom that replicates real-world scenarios. Re-imagine the Food Retail business with solutions from Eliwell and Schneider Electric.



REGISTER NOW



UPDATE CENTER

The easiest way to know what's new in the Eliwell world: documentation, software, available Training resources and real application. Set your preferences and stay always up to date!



Life Is On



ITALY - HEADQUARTERS

Eliwell Controls srl
Via dell' Industria, 15 Z. I. Paludi
32016 Alpago (BL) - ITALY
T +39 0437 166 0000

Sales

T +39 0437 166 0060 (Italy)
T +39 0437 166 0066 (other countries)
E saleseliwell@se.com

Technical support

T +39 0437 166 0005
E techsuppeliwell@se.com



Contattaci

Try now how the technical manual is easy and quick to use



1 Download myEliwell APP

Scan this QR code and access the page where you can download myEliwell APP



2 Browse the technical manual

Use myEliwell APP to scan this QR code: you will access the technical manual

Access Software area updates and up-to date drivers



eliwell.com/software

CT123455 • BRO REFRIGERATION EXPERT EN – Rel. 09/24
© 2024 Eliwell - All rights reserved

Follow us on  

eliwell.com

Since 1980, Eliwell has been developing and manufacturing control systems, solutions and services for both commercial and industrial refrigeration units. It embodies the success story of an Italian company that has brought Made in Italy technological developments to the world for over 40 years. In 2014, it became part of the Schneider Electric group and remains its centre of excellence for HVACR applications. Together with Schneider Electric, Eliwell is now the global partner providing efficient and sustainable solutions and services for food storage and distribution systems, and for integrated resource control of environmental comfort installations.